

Campbell's Foodservice

We bake Goldfish® Crackers with smiles and ingredients you can feel good about.

- 0g Trans Fat per serving
- 1 oz. grain equivalent per package
- Baked with real cheese
- Colors sourced from plants
- No artificial flavors or preservatives
- Smart Snack compliant
- Whole grain-rich



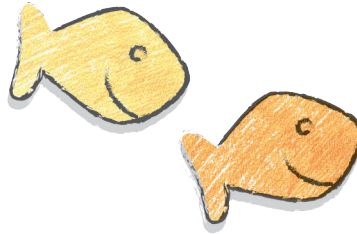
2024-2025 SCHOOL YEAR | QUALIFYING PRODUCTS

Code	Product Description	Pack Size	Grain Oz. Eq.	V	Smart Snack	Points
Pepperidge Farm® Goldfish® Baked with Whole Grain Snack Crackers						
18197	100 Calorie Cheddar	100/0.75 oz.	1	V	X	20
18105	Cheddar	300/0.75 oz.	1	V	X	20
21680	Cheddar	60/1 oz.	1.5	V	—	20
05478	Cheddar	6/31 oz.	1.75	V	—	20
04788	Colors Cheddar	300/0.75 oz.	1	V	X	20
27516	Disney Mickey Mouse Cheddar	300/0.75 oz.	1	V	X	20
14396	Pretzel	300/0.75 oz.	1	V	X	20
23088	Xtra Cheddar	300/0.75 oz.	1	V	X	20
Pepperidge Farm® Goldfish® Snack Crackers						
14367	Cheddar	300/0.75 oz.	1	V	—	20
05477	Cheddar	6/31 oz.	1.75	V	X	20

V Vegetarian

Increase Breakfast Participation

Our Goldfish® Breakfast Combo is reimbursable and can be packaged into a convenient Grab N' Go format.



Bring Plant-based Beverages to Your Students!

- 1 c. vegetables per 8 oz. serving
- 100% Tomato Juice
- No added sugar
- Smart Snack compliant



2024-2025 SCHOOL YEAR | QUALIFYING PRODUCTS

Code	Product Description	Pack Size	Veg (cup)	V	GF	Smart Snack ¹	Points
Campbell's® Tomato Juice							
00366	Tomato Juice, Can	12/46 oz.	1	V	GF	X	10
V8® Original 100% Vegetable Juice							
20616	Low Sodium Vegetable Juice, PET	6/46 oz.	1	V	GF	X	10
15316	Vegetable Juice, Can	24/11.5 oz.	1.375	V	GF	X	10
00020	Vegetable Juice, Can	48/5.5 oz.	0.625	V	GF	X	10
13804	Vegetable Juice, PET	12/12 oz.	1.5	V	GF	—	10
V8® Spicy Hot 100% Vegetable Juice							
20807	Low Sodium Vegetable Juice, PET	6/46 oz.	1	V	GF	X	10
20611	Vegetable Juice, PET	12/46 oz.	1	V	GF	X	10
13802	Vegetable Juice, PET	12/12 oz.	1.5	V	GF	—	10
V8® Vegetable Juice							
00336	Vegetable Juice, Can	12/46 oz.	1	V	GF	X	10
20808	Vegetable Juice, PET	6/46 oz.	1	V	GF	—	10

V Vegetarian **GF** Gluten Free



¹Per 8 oz. serving (Elementary) or 12 oz. serving (High School/Middle School).

Code	Product Description	Pack Size	Grain Oz.Eq.	Veg	V	VG	GF	Points
Campbell's® Culinary Reserve Frozen Pouch Soups								
27443	Reduced Sodium Chicken Noodle	4/4 lb.	0.5	—	—	—	—	35
27444	Reduced Sodium Tomato Basil	4/4 lb.	—	1.125	V	—	GF	35
27445	Reduced Sodium Vegan Vegetable	4/4 lb.	—	0.5	V	VG	GF	35
16835	Roasted Red Pepper & Gouda Cheese	4/4 lb.	—	1.25	V	—	—	30
20602	Southwestern Vegetarian Chili	4/4 lb.	—	0.875	V	VG	—	30
Campbell's® Culinary Reserve Frozen Tub Soups								
08556	Boston Clam Chowder	3/4 lb.	—	0.25	—	—	—	30
08187	Broccoli Cheese	3/4 lb.	—	0.125	—	—	—	30
11927	Brown & Wild Rice with Chicken	3/4 lb.	0.5	—	—	—	—	30
11919	Chicken & Dumplings	3/4 lb.	—	—	—	—	—	30
08186	Chili con Carne	3/4 lb.	—	0.875	—	—	—	30
08173	Cream of Broccoli	3/4 lb.	—	0.125	V	—	—	30
08166	Cream of Potato	3/4 lb.	—	0.25	V	—	—	30
11921	Cream of Potato with Bacon	3/4 lb.	—	0.25	—	—	—	30
14903	Creamy Tomato Basil Bisque	3/4 lb.	—	0.5	V	—	—	30
08297	Creole Chicken Gumbo	3/4 lb.	—	0.375	—	—	GF	30
08558	Golden Broccoli Cheese	3/4 lb.	—	0.125	V	—	GF	30
08169	Homestyle Chicken Noodle	3/4 lb.	—	—	—	—	—	30
10428	Italian Style Wedding	3/4 lb.	—	—	—	—	—	30
10431	Mexicali Tortilla	3/4 lb.	—	0.5	—	—	GF	30
08167	Minestrone	3/4 lb.	—	0.375	V	—	—	30
08170	New England Clam Chowder	3/4 lb.	—	0.25	—	—	—	30
10429	Pasta Fagioli	3/4 lb.	—	0.625	V	—	—	30
11836	Roasted Chicken Noodle	3/4 lb.	—	0.125	—	—	—	30
08180	Split Pea with Ham	3/4 lb.	—	0.25	—	—	GF	30
08251	Vegetable	3/4 lb.	—	0.5	—	—	—	30
08163	Vegetable Beef	3/4 lb.	—	0.375	—	—	—	30
11340	Vegetarian Garden Vegetable	3/4 lb.	—	0.75	V	—	GF	30
11971	Vegetarian Garden Vegetable with Rotini	3/4 lb.	—	0.625	V	—	—	30
11394	Vegetarian Seven Bean	3/4 lb.	—	0.75	V	—	—	30
Campbell's® Culinary Reserve Healthy Request® Frozen Tub Soups								
19121	Chicken with Egg Noodles	3/4 lb.	—	—	—	—	—	30
19120	Harvest Tomato with Basil	3/4 lb.	—	1	V	VG	—	30
14223	Homestyle Sweet Pepper & Beef	3/4 lb.	—	0.625	—	—	GF	30
19123	Mediterranean Style Vegetable	3/4 lb.	—	0.25	V	—	GF	30
19122	Mexican-Style Chicken Tortilla	3/4 lb.	—	0.375	—	—	GF	30
15357	Portobello Mushroom & Barley	3/4 lb.	—	0.25	V	—	—	30
16273	Rosemary Chicken & Dumpling	3/4 lb.	—	0.125	—	—	—	30
16866	Tuscan Style White Bean with Chicken	3/4 lb.	—	0.125	—	—	—	30
Campbell's® Healthy Request® Shelf Stable Can Soups								
04142	Chicken Noodle	12/50 oz.	—	—	—	—	—	35
04143	Cream of Chicken	12/50 oz.	—	—	—	—	—	35
04144	Cream of Mushroom	12/50 oz.	—	—	V	—	—	35
04145	Tomato	12/50 oz.	—	0.625	V	VG	—	35
Campbell's® Shelf Stable Can Soups								
01296	Bean with Bacon	12/52 oz.	—	0.5	—	—	—	25
01256	Chicken Noodle	12/50 oz.	—	—	—	—	—	25
00444	Chicken Noodle	24/7.25 oz.	0.5	—	—	—	—	25
01526	Chicken with Rice	12/50 oz.	—	—	—	—	—	25
01036	Cream of Chicken	12/50 oz.	—	—	—	—	—	25
01266	Cream of Mushroom	12/50 oz.	—	—	V	—	—	25
02046	Cream of Potato	12/50 oz.	—	0.25	V	—	—	25
27225	Garden Vegetable	12/50 oz.	—	0.25	V	—	—	25
00614	Low Sodium Chicken Noodle	24/7.25 oz.	0.5	—	—	—	—	25
00601	Low Sodium Tomato	24/7.25 oz.	—	0.625	V	VG	—	25
00603	Low Sodium Vegetable	24/7.25 oz.	—	0.25	—	—	—	25
27147	Minestrone	12/50 oz.	—	0.375	V	—	—	25
01366	New England Clam Chowder	12/50 oz.	—	0.25	—	—	—	25
00016	Tomato	12/50 oz.	—	0.75	V	VG	—	25
00447	Tomato	24/7.25 oz.	—	0.625	V	VG	—	25
01026	Vegetable	12/50 oz.	—	0.5	—	—	—	25
00441	Vegetable	24/7.25 oz.	—	0.25	—	—	—	25
27146	Vegetable Beef	12/50 oz.	—	0.375	—	—	—	25
01156	Vegetarian Vegetable Alphabet	12/50 oz.	—	0.625	V	—	—	25
Swanson® Broths								
19880	Beef, Aseptic	8/48 oz.	—	—	—	—	GF	25
16887	Chicken, Aseptic	8/48 oz.	—	—	—	—	GF	25
09772	Clear Chicken, Can	12/49.5 oz.	—	—	—	—	—	25
27514	Natural Goodness® Chicken, Can	12/49 oz.	—	—	—	—	—	25

Healthy Request® V Vegetarian VG Vegan GF Gluten Free

Check Out 
THE RECIPES BELOW AND DISCOVER MORE KID FRIENDLY OPTIONS AT:
 Campbell'sFoodservice.com/recipes
 or scan the QR code



Chicken and Waffles featuring
 04143 Campbell's® Healthy Request®
 Cream of Chicken Soup



Chicken Salad Wrap featuring
 04143 Campbell's® Healthy Request®
 Cream of Chicken Soup



Sloppy Joe Sliders featuring
 04145 Campbell's® Healthy Request®
 Tomato Soup



Chicken Cacciatore featuring 27444
 Campbell's® Signature Reduced Sodium
 Tomato Basil Soup

FULL OF FLAVOR. NO SODIUM.
 only **390 MG OF SODIUM PER SERVING¹**



27443 Campbell's®
 Signature Healthy Request®
 Reduced Sodium Chicken Noodle



27444 Campbell's®
 Signature Healthy Request®
 Reduced Sodium Tomato Basil



27445 Campbell's®
 Signature Healthy Request®
 Reduced Sodium Vegan Vegetable

Campbell's Foodservice

Campbell's® is building business practices that contribute to the well-being of our stakeholders and the world around us. We're taking an increasingly holistic approach to crafting these practices and have prioritized the Environmental, Social, and Governance (ESG) areas that are most important to our company and where we believe we can make measurable positive impacts.



learn more about
OUR ESG STRATEGY

Scan the QR code or visit:
CampbellsSoupCompany.com

OUR ENVIRONMENTAL, SOCIAL, AND GOVERNANCE FRAMEWORK

<p>Trusted Food</p> <p>We make delicious, wholesome, accessible food people rely on every day, made with quality ingredients they can trust.</p> <p>Focus areas</p> <ul style="list-style-type: none"> - Advancing health and well-being - Promoting animal welfare - Operating transparently 	<p>Vibrant Communities</p> <p>We help build vibrant communities where we live and work, and we source our ingredients with care, so the people we depend on can enjoy brighter futures.</p> <p>Focus areas</p> <ul style="list-style-type: none"> - Improving healthy food access and education - Building strong community connections - Sourcing responsibly 	<p>Thriving People</p> <p>We are creating an inclusive, high-performing culture where all employees feel valued and supported with fulfilling opportunities to do their best work.</p> <p>Focus areas</p> <ul style="list-style-type: none"> - Building a winning team and culture - Prioritizing inclusion and diversity - Caring for our people 	<p>Healthy Environment</p> <p>We work towards a healthier environment from field to factory to families, promoting sustainable ecosystems and a positive impact every day.</p> <p>Focus areas</p> <ul style="list-style-type: none"> - Combating climate change - Promoting sustainable water supplies - Working to eliminate waste - Improving circularity in packaging
<p>Governance & ethics Risk management, Code of conduct, Customer satisfaction, Board diversity</p>			

LOOKING FOR THEMES AND ACTIVITIES to keep kids engaged all school year long?

Our team loves finding new ways to support our K-12 partners. That's why we created the "Four Seasons of School" calendar, a month-by-month resource complete with themed activity ideas, recipes your students will crave and lots of fun facts.



**4 SEASONS OF SCHOOL CALENDAR and more
RESOURCES AVAILABLE ON OUR SITE**

Scan the QR code or visit:
CampbellsFoodservice.com/solutions/solutions-by-segment/k-12-schools/



REAL SIMPLE. REAL COOL.



30TH ANNIVERSARY



PURCHASE

Member Manufacturer
qualifying products



RECEIVE

points on
qualifying purchases



REDEEM

for items to enhance
your meal program

Create YOUR OWN

Use your points toward
custom items by contacting:
Support@CoolSchoolCafe.com



Offer Grab N' Go
solutions for
students and staff

Further your professional
knowledge by attending
conferences



SCHOOL
NUTRITION
ASSOCIATION

BREAKFAST

• on the go •



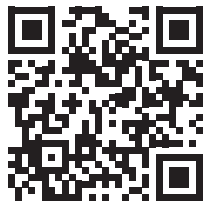
Increase student
participation with
giveaways



Show appreciation
for your team



Keep your kitchen
running smoothly with
new smallwares



SCAN CODE and
ENROLL NOW!

"Cool School Cafe has a huge impact on our meal program! We love to use the points to attend conferences or to redeem items for students and staff. Thank you!"

- 2023 Cool School Survey Respondent



An alternative item that is deemed a better choice for the environment.



Visit CoolSchoolCafe.com for a complete listing of items to enhance your meal program.

Categories include: Activities, Apparel, Cafeteria/Dining, Education, Equipment, Kitchen, Marketing, Mobile Feeding, Student Items and more.

